



&
MATTEROFFRACTIONS

BlumSafe Screen Installation Instructions

Congratulations on your purchase of the BlumSafe and the BlumSafe Screen! We are confident that they will provide you with many years of satisfaction and utility.

The Screen is an add-on product to your BlumSafe, allowing the BlumSafe, any other wall safe or a wall nook to be concealed behind a useful and programmable electronic display screen. Please **carefully** read these instructions in conjunction with the [BlumSafe Installation Instructions](#) **before** mounting your BlumSafe in the wall. We also urge you to **view the BlumSafe installation video** at our website at <https://blumsafe.com/video/> -- but please also read these directions which cover items not included in the video! If you have any questions about installation or operation, email your questions and your telephone number to MatterofFractions@gmail.com

The Screen works with an optional RFID lock that you may purchase and install at any time.

INSTALLING THE BLUMSAFE SCREEN REQUIRES MODERATE ROUGH CARPENTRY SKILLS. IF YOU ARE NOT TOTALLY CONFIDENT IN YOUR ABILITIES, SEEK THE ASSISTANCE OF A PROFESSIONAL CARPENTER OR HANDYMAN TO INSTALL.

THE BLUMSAFE AND THE SCREEN ARE HEAVY. WE ARE NOT RESPONSIBLE FOR ANY INJURY TO YOURSELF OTHERS, ANY DAMAGE TO YOUR WALLS, YOUR TOOLS, YOUR SAFE OR ITS CONTENTS, OR THE SCREEN, WHICH IS FRAGILE AND SHOULD BE HANDLED WITH CARE.

IF YOU CHOOSE TO STORE FIREARMS IN YOUR SAFE, ALWAYS EMPLOY SAFE HABITS, INCLUDING STORING THEM UNLOADED, PROTECTING YOUR SAFE FROM ACCESS BY CHILDREN AND STORING YOUR AMMUNITION IN A SEPARATE LOCKBOX.

* * *

Required Tools:

- **Philips Screwdriver.** A power driver or Philips bit in a power drill will make things easier.
- **A 1/2" bit and drill** to drill pilot holes in the wall alongside studs for the anchors that attach the hinge plate to the wall.
- **A level or straightedge.**
- **Gloves (optional),** so that you don't dirty the finish of the Screen or the BlumSafe while installing. Regular fingerprints can be removed with a moist toilette or moist, clean cloth.
- **A Helper.**

Installation Instructions

1. Unboxing the display. Near your installed safe, place the Screen face down on top of the box packaging for protection of the Screen.

2. Install the BlumSafe into the Wall. If you have not already done so, install the BlumSafe into the wall, following the instructions that came with your BlumSafe. IF YOU ARE USING THE SCREEN WITH ANOTHER TYPE OF WALL SAFE OR SIMPLY TO COVER A WALL NOOK, ADJUST THE FOLLOWING INSTRUCTIONS FOR YOUR INSTALLATION.

3. Installing the power supply. The power wire on the back of the Screen is run through the same wall cavity as the power supply for the BlumSafe winders, to the same wall outlet. Place a piece of masking tape on the wall next to the flange surrounding the BlumSafe. Remove the safe from the wall cavity, set aside. Next to the stud (on the hinge side of the display), cut a 5/8" wide notch down the drywall, right alongside the inside of the stud, 5/8" into the masking tape (aka, below the safe flange). This provides a hole for you to run the wire below the safe flange, to power. At this point, route the display power supply wire into the wall cavity and connect to US 110v power. (Consult a professional electrician if necessary).



4. Removing Hinge Plate from Screen and Mounting hinge plate on wall. After the safe is (re)installed into the wall, measure a horizontal line 1/2" (parallel) above the top of the safe flange. Mark the line using masking tape. Extend the line past the right edge of safe. Remove the hinge plate from display – (6) Phillips screws from hinges and (1) cable holder. Align the hinge plate along the right side of the safe flange (fitting the raised flange of the safe into the recess on rear of the hinge plate). Align the top corner of the hinge plate with the 1/2" mark above the safe. The hinge plate has 3 holes drilled through it for attachment to the wall. While holding the hinge plate in place, mark onto the wall these 3 mounting holes. Set the hinge plate aside, drill 1/2" holes in the 3 marked spots on the wall for anchors. Install the SnapToggle anchors (see next page for guide) and mount the hinge plate with the included hardware.



5. If you have purchased the optional Lock Bar, you can attach it to the frame now. Remove the plywood panel on the rear of the display (rotate bracket for easy removal). Feed the usb cable (from lock bar) through the hole in the bottom of the frame. Clamp (or hold) the lock bar in place, aligning the edges and back. Using the provided (2) wood screws, fasten the lock bar in place using the predrilled holes. Do not over-tighten the screws. Re-install the plywood panel.

6. Mount BlumSafe Screen. With a helper, hold the display up to the hinge plate and reconnect the hinges with the six Phillips screws. Feed excess power cord into the wall cavity. *Optional:* Insert grommet (included) where the power supply enters the wall. You should now be able to close the safe. The power cable may need to be manipulated for smooth operation.

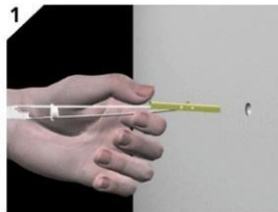
7. DAKboard Setup. Once powered on, you should see a setup screen. If the screen does not power on, you can toggle the display power button at the top rear of the display. Search "DAKboard setup" on YouTube or scan this QR code (below) to watch the setup process.

*power cycling the Raspberry Pi may require removal of the small plywood panel on rear of display (rotate bracket for easy removal)

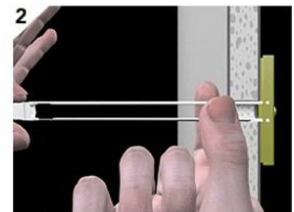
Easy SnapToggler Installation



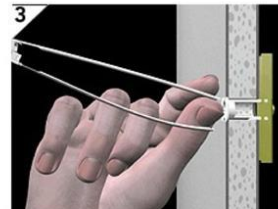
Scan for DAKboard setup!



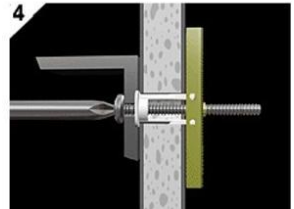
Step 1: Drill a 1/2" hole. Hold the metal channel flat alongside the plastic straps and slide channel through the hole.



Step 2: Hold ends of strap and pull towards you until the channel sits flush against the inside of the wall. Then slide the plastic cap until it sits tight on the outside of the wall.



Step 3: Snap straps at the wall by pushing side to side. Snap off the straps level with the flange cap.

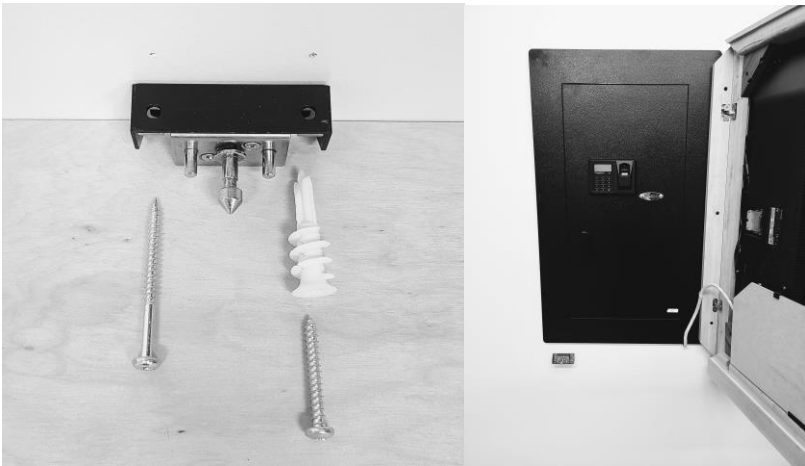


Step 4: Place grab bar flange over the plastic toggle bolt wall cap. Insert bolt and tighten. 1.5" bolt supplied or use a 1/4-20 machine screw of desired length. (depending on wall thickness)

Lock Bar Installation Instructions (Optional Add-On)

Installation Instructions

1. Mount Lock Plate On Wall. Please read the entire instructions for the RFID lock (included). Insert the lock plate into the RFID lock. It will be slightly loose, try to center it as best you can. Remove the protective layer from the double-sided tape that is on the back of the lock plate. Close your Screen Display frame to activate the double-sided tape onto the wall. Using the keycard, unlock the latch, then carefully open your Safe Display. The lock plate should be stuck to the wall in the proper location. Using the provided hardware, fasten the lock plate to the wall. The left hole should line up with the stud behind the wall. The #8 x 2-½" screw will go in the left hole through the wall and into the stud and the drywall anchor and provided screw will go in the right side (NOTE: if you have built the wall with wood framing inside the wall behind the right hole as well, just use the screw, not the anchor).



2. Finish! Finish programming the lock if you haven't already done so. Enjoy!